

REMS

Radiation Energy Mapping Systems



REMS is a powerful integrated software platform used for predicting and analyzing RF Radiations from all Radio/Wireless telecommunication transmissions in three dimensions (3D) at real-time speed

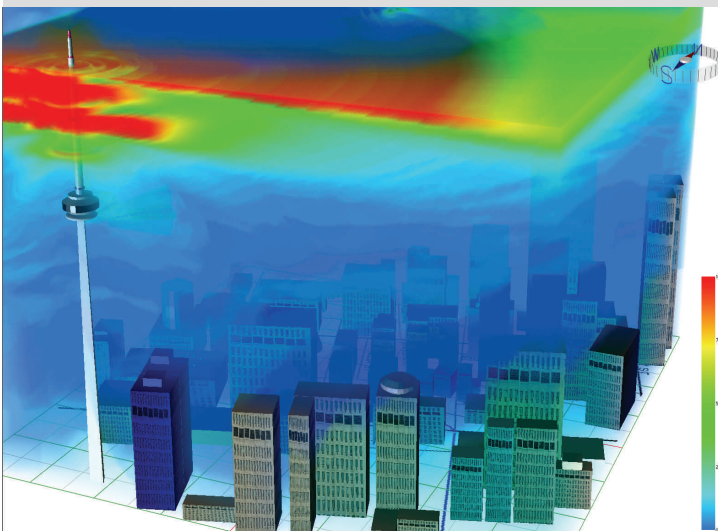
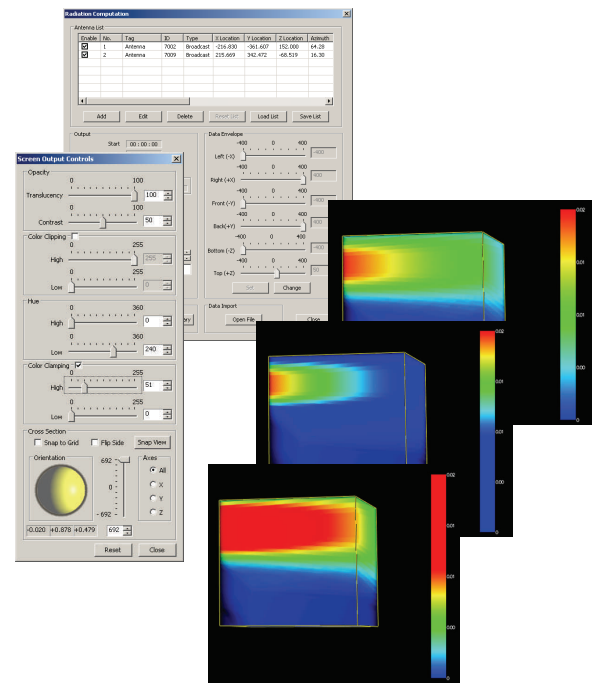
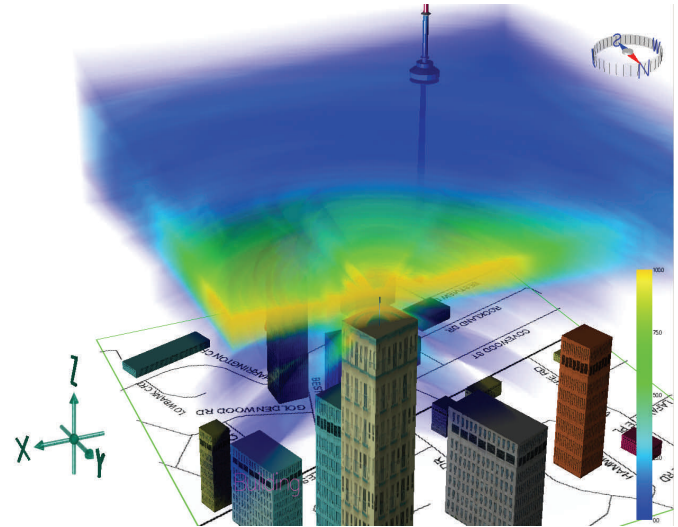
REMS provides a common platform for the entire Radio Telecommunication industry to proactively evaluate and manage RF Radiation outputs that affects health, safety and the environment

RF Radiations prediction technologies in **REMS** is invaluable for Spectrum Management engineers to determine all potential hazard areas prior executing field measurement thus improving on efficiencies

REMS is a real life, true to scale, 3 dimensional display of RF radiation exposure envelope, which is useful for demonstration by visual simplifying complex issues

REMS intuitive user interface is designed with flexibility for superior usability to minimize the software learning curve for all of its users

REMS is designed for computing and displaying the power flux density (Electro-Magnetic Radiation) of various types of radio communication stations operating in the frequency band of 30 MHz to 40 GHz (a subset of 3kHz – 300 GHz) in 3D views



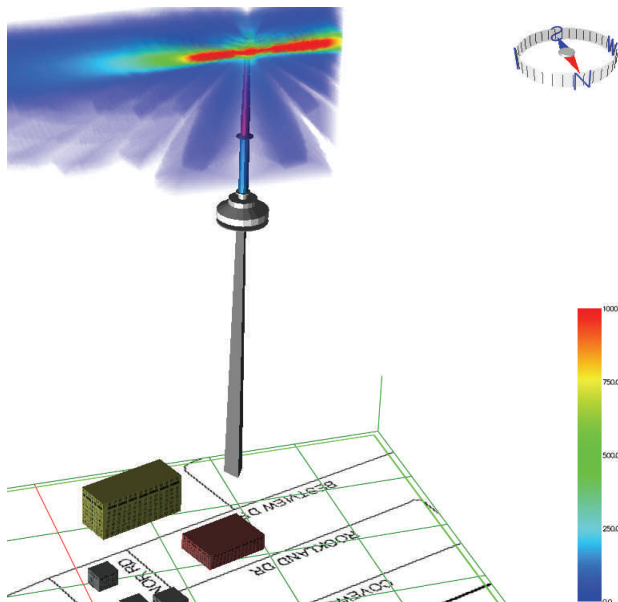
REMS software contains powerful 3D visual rendering engines and sophisticated processing calculation algorithms ensuring an accurate, responsive analysis environment to vastly improve productivities for all of its users

REMS is a tool of choice for Spectrum Management engineers, telecommunication providers and industry regulators to ensure public health and safety are met with consistent results and minimal efforts

REMS has been vigorously tested under extreme computing conditions and on various hardware platforms to ensure maximum stability and error-free operations

REMS is built upon an Object Oriented Design that offers a highly modular and fully customizable analysis environment to ensure versatility and flexible for its users

REMS was designed using the latest technologies and architecture to optimize performance, stability and functionality



Minimum System Requirements

- Intel Pentium 1.5GHZ
- 1 GB RAM, 20 GB HDD, CD-ROM
- ATI & NVIDIA OpenGL 128MB Graphic Cards
- Monitor with 1280x1024 resolution
- Microsoft Windows XP/2000
- Microsoft SQL2000 Server / Oracle DBMS

i2s Technologies Inc. provides innovative software solutions for the Wireless Telecommunication Industries. We are the maker of the comprehensive 3D **Radiation Energy Mapping Systems (REMS)** aimed to assist in regulating and managing emission of RF Radiations

Our research is primarily focused on prediction, measurement and analysis of Electromagnetic Radiation. For more information, please contact us at 1-416-319-5119 or via email at info@i2stech.com

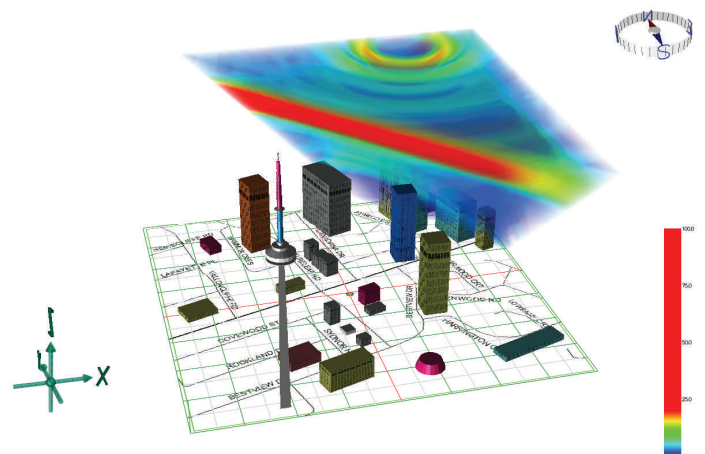


i2s Technologies Inc.
 Sheridan Science & Technology Park
 2240 Speakman Drive, Suite 101
 Mississauga, Ontario
 Canada L5K 1A9



REMS Highlights

- ◆ Fully compatible with Windows XP, 2000 and Novell Netware
- ◆ Compatible with all major databases with ODBC connectivity such as Oracle and SQL server
- ◆ **REMS** Workspace is capable of rendering designs covering up to 800 x 800 meters in area (approx. 158 acres)
- ◆ **REMS** can render unlimited number of structure objects such as buildings, towers, antennas and people
- ◆ **REMS** is capable of simulation of RF Radiation fields for quick assessments prior commitment to extensive design simulation
- ◆ All objects in **REMS** are rendered 3 dimensional, accurate to life scale, fully textured and highlighted for realistic look
- ◆ Sophisticated collision avoidance algorithms are employed within **REMS** to enhance users' design capabilities
- ◆ Superior GUI design for enhance usability experience. Accurate prediction of radiation patterns using proven technologies



GENERAL INQUIRY

Phone: 1 416-319-5119
 Email: info@i2stech.com
 Website: www.i2stech.com